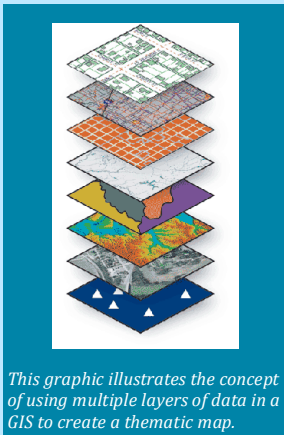


What does Geographic Information Services do?

Geographic Information Services (GIS) is a division of the Currituck County Information Technology Services Department. The primary purpose of the Geographic Information Services division is to maintain the County's Geographic Information System, a computer-assisted information system to collect, store, manipulate and display spatial (geographic) data within the context of an organization, with the purpose of functioning as a decision support system. In addition, the GIS division provides geographic data, maps and related services to County departments, citizens, Internet users, private businesses and various boards, commissions and committees.



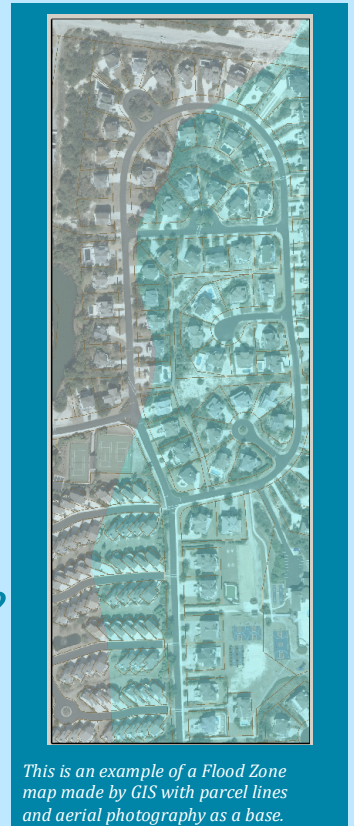
The Five main components of a GIS are; Software, Hardware, Data, Applications and People.



This graphic illustrates the concept of using multiple layers of data in a GIS to create a thematic map.

What is a Geographic Information System?

A Geographic Information System (GIS) is a computer system which uses graphics and data to create maps that identify problems and evaluate possible solutions. GIS mapping links spatial data-the actual physical location of something-with attribute data, or information about that location. For example, the physical location of a lake is spatial data, while the lake's name and size are attribute data.



This is an example of a Flood Zone map made by GIS with parcel lines and aerial photography as a base.

What can GIS data and mapping be used for?

- ◆ Parcel Ownership
- ◆ E-911 Mapping
- ◆ Economic Development Projects
- ◆ Land Development
- ◆ Code Enforcement
- ◆ Infrastructure Mapping
- ◆ Storm Damage Mitigation
- ◆ Service Routing
- ◆ Environmental Analysis
- ◆ Flood Plain Mapping
- ◆ Tax Value Assessment
- ◆ Crime Analysis
- ◆ Health Trends and Patterns
- ◆ Population Analysis
- ◆ Representation Analysis
- ◆ Point of Interest Mapping

Can I access county GIS information via the Internet?

Yes, Currituck County GIS data is available for viewing on the web. Click the link below to check it out.

<http://currituckncgov.com/Freeance/Client/PublicAccess1/index.html?appconfig=BaseMap>

In addition, some county GIS data can be downloaded for free. Many more GIS data layers can be found by performing a simple internet search.

How do I contact Geographic Information Services to obtain additional information?

Harry Lee, GISP
GIS Coordinator
Phone: 252.232.2034 ext. 4039
E-mail: Harry.Lee@currituckcountync.gov

Lucy Cardwell, GISP
GIS Specialist-Land Records
Phone: 252.232.2034 ext. 4038
E-mail: Lucy.Cardwell@currituckcountync.gov